



Welcome To The SitePal Player Skin Guide

What is a Player Skin?

A **Player Skin** is the window frame of a SitePal scene in which your SitePal speaking character appears. You can customize the appearance of your **Player Skin** as well as functional features.

Player Skin Example



Ragged Player Skin option

[Click Here to Get Started!](#)



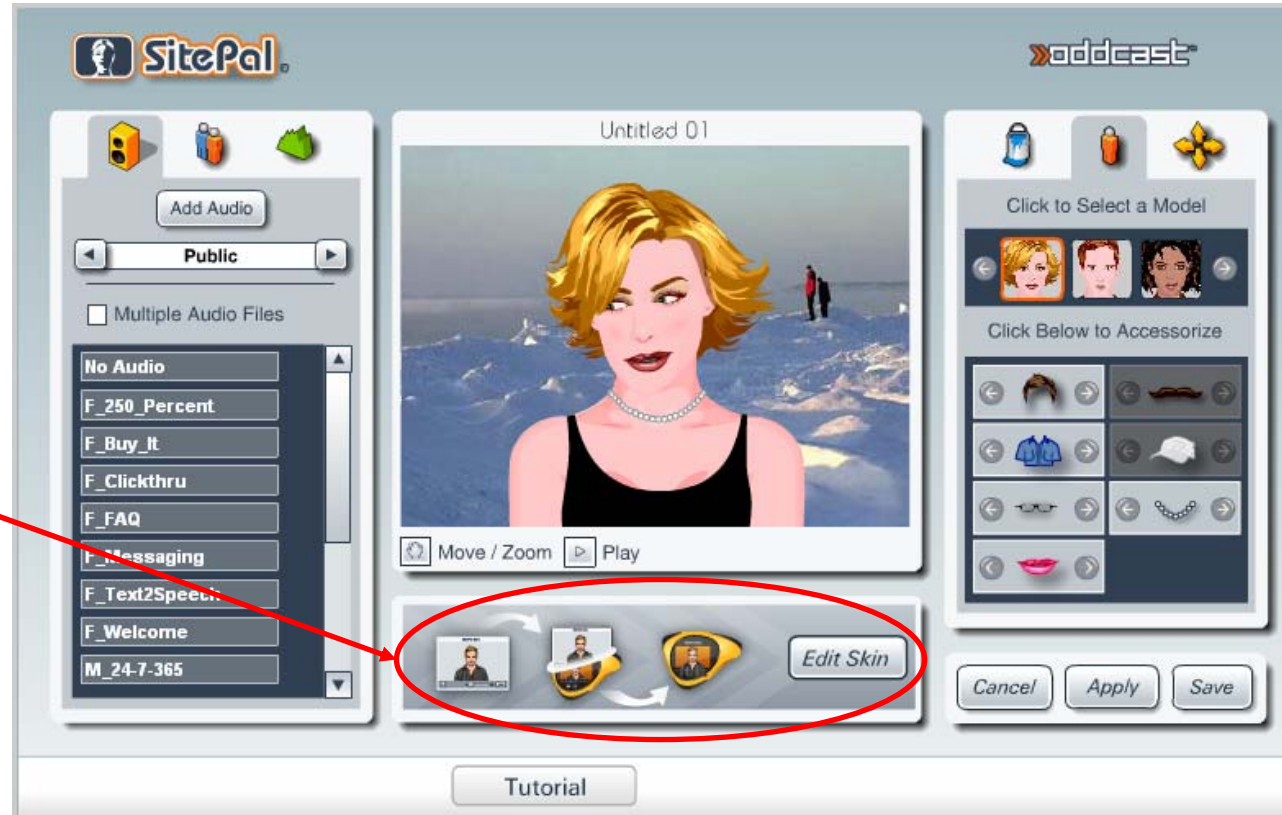
Please click on any of the topics below to learn more. To return to this menu, please click on this icon located at the bottom of each slide.

- I. [Selecting a Player Skin](#)
- II. [Customizing Your Player Skin](#)
- III. [Using Functional Player Skins](#)
 - a. [Lead Generator Skin](#)
 - b. [FAQ Skin](#)
 - c. [Artificial Intelligence Skin](#)

[NEXT>>](#)

I. Selecting A Player Skin

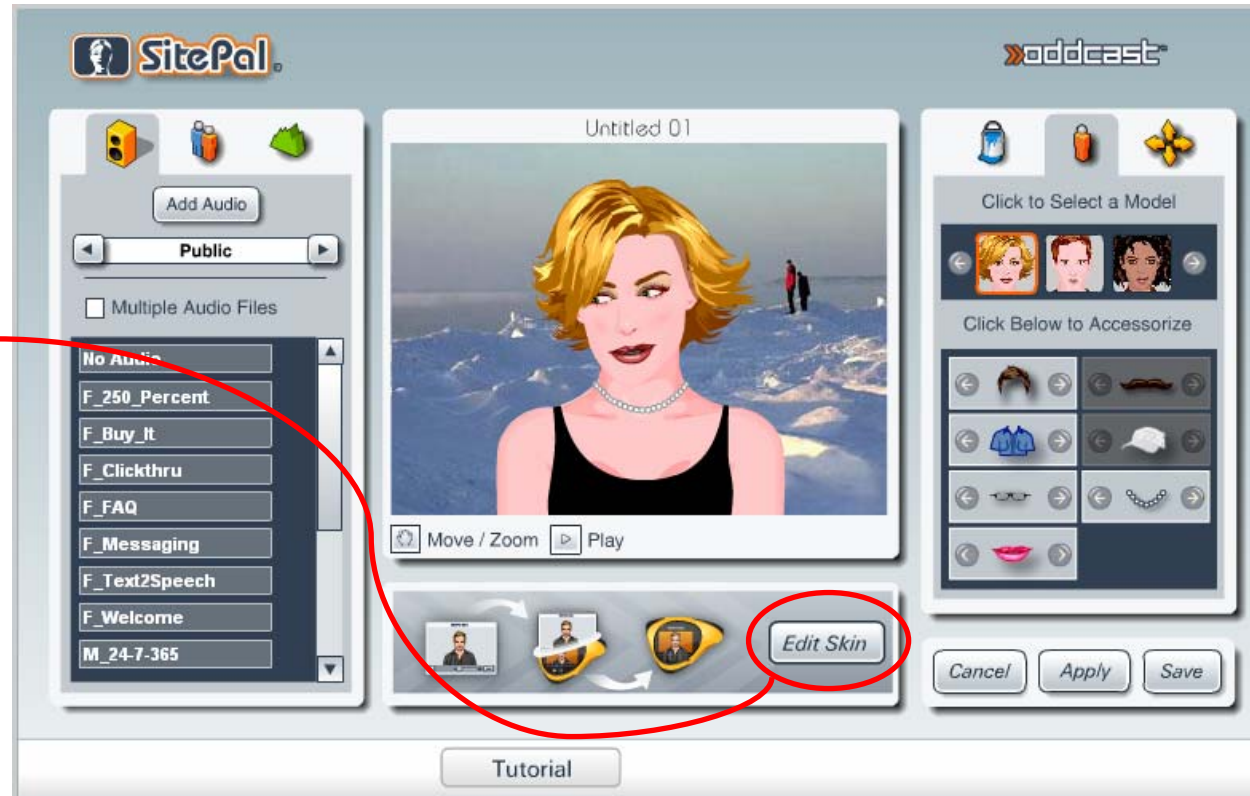
The Player Skin window inside the main scene editor allows you to quickly browse available Player Skin designs and choose the one you like.



NEXT>>



Click the “Edit Skin” button to bring up the Skin editor. The Skin Editor displays available Player Skin designs by categories as well as allows you to further customize your Player Skin.



[<<BACK](#)

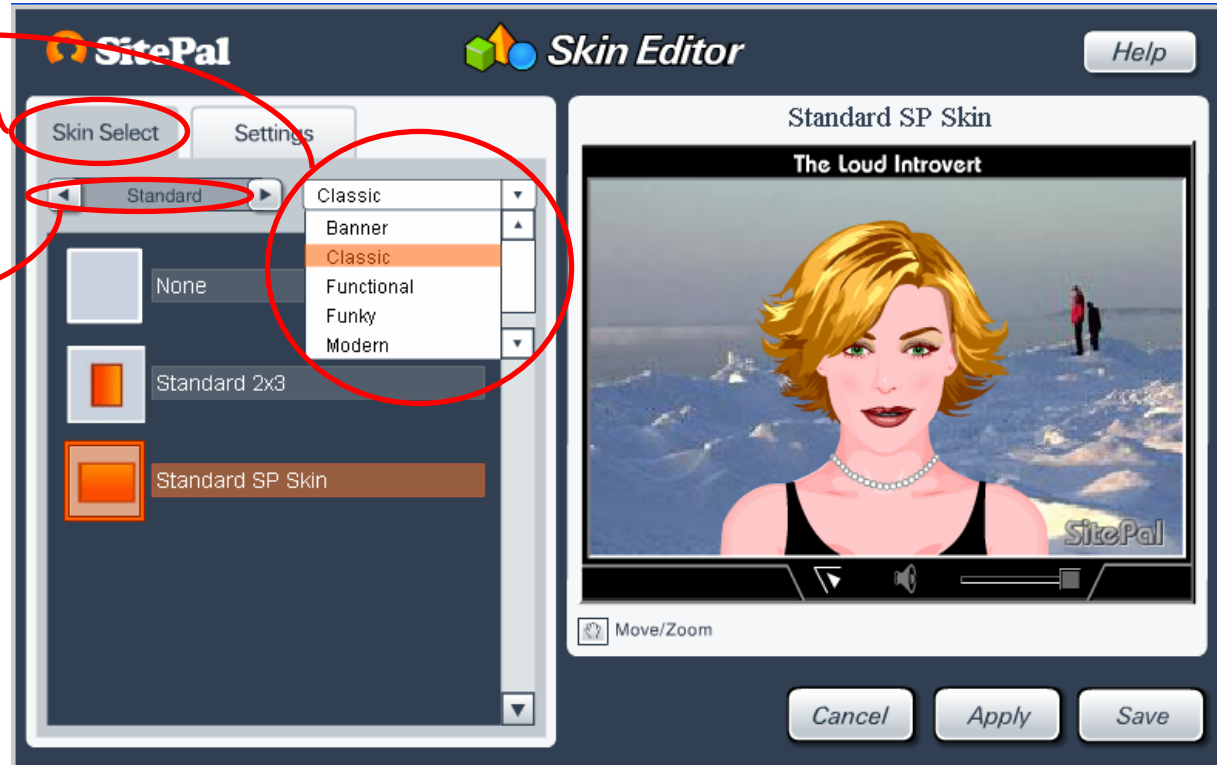
[NEXT>>](#)



Click 'Skin Select' tab to browse available Skin designs by categories.

The menu to choose the function of your Player Skin is set as "Standard" by default.

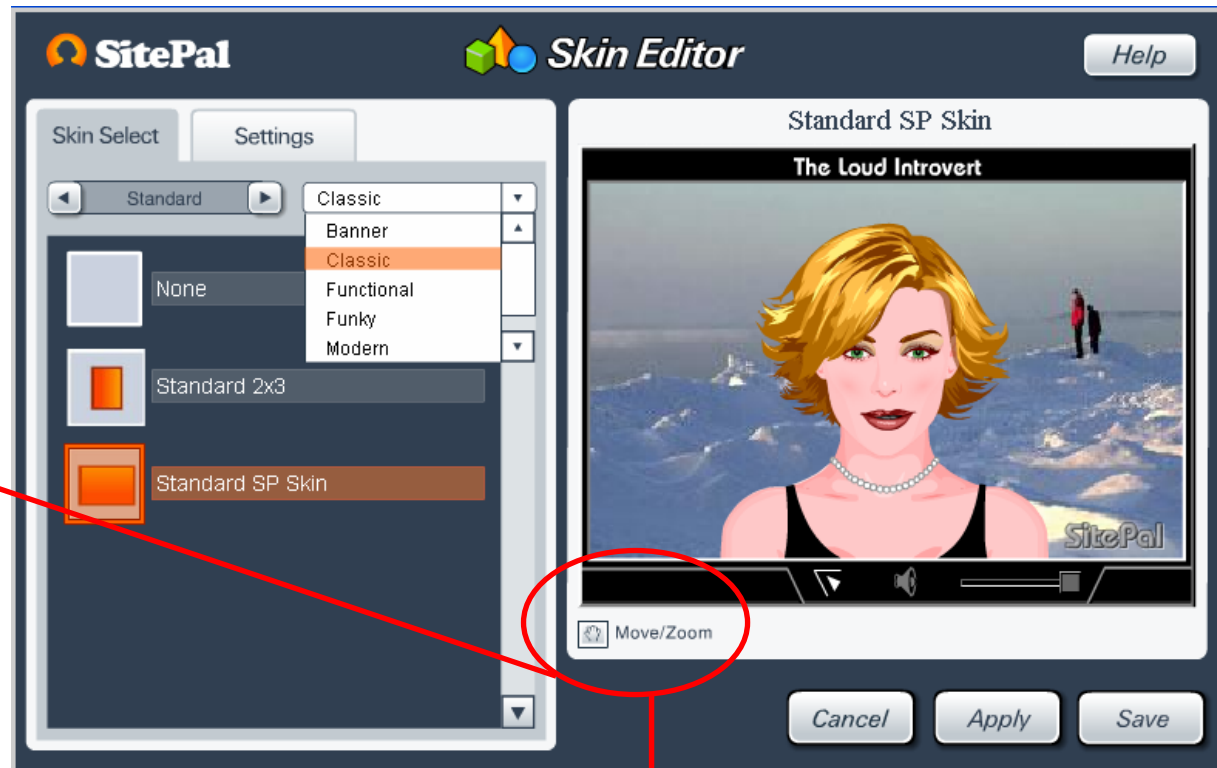
Please see "[Section III](#)" for information on using other Player Skin function.





[<<BACK](#)

[NEXT>>](#)





To reposition your character in the new Skin, click the “Move/Zoom” icon and use the arrows to position your character.

To reset the character in it's default position, please click on the  and .



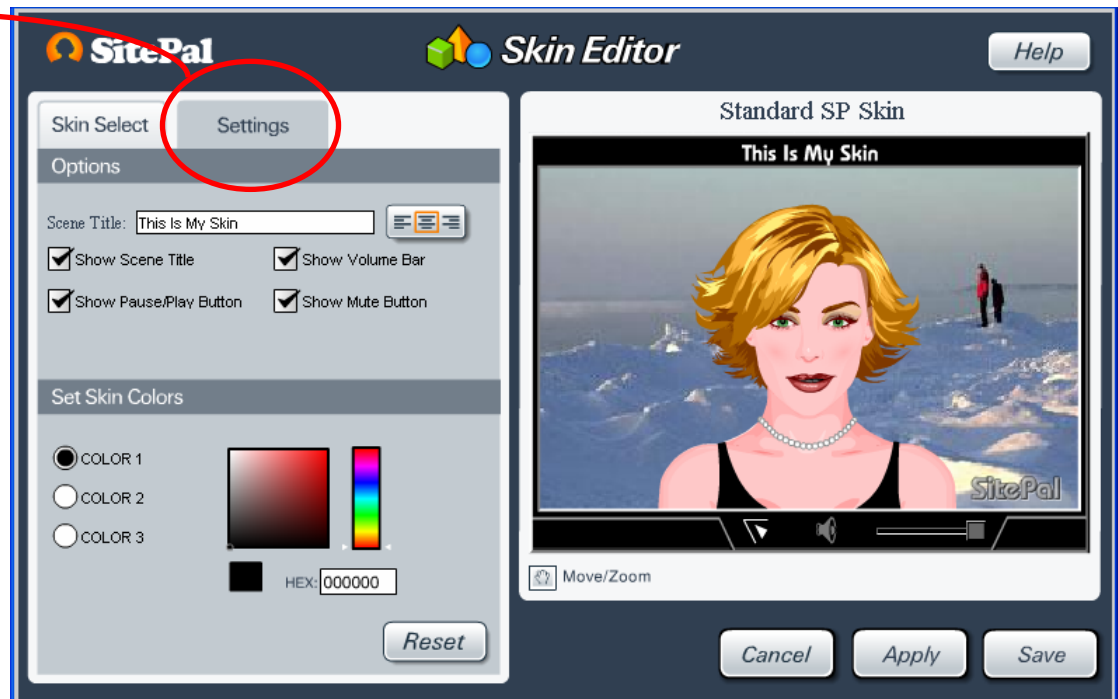
[<<BACK](#)

[NEXT>>](#)



II. Customizing Your Player Skin

To edit the appearance of your Player Skin, click the “Settings” tab inside your Skin Editor.



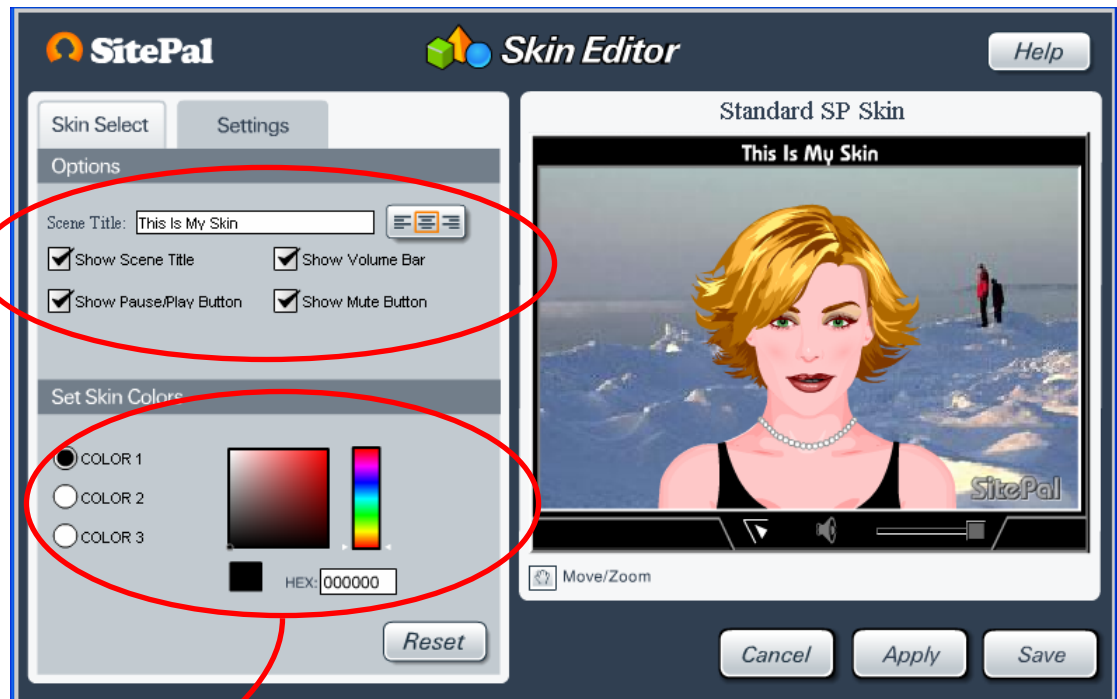
[<<BACK](#)

[NEXT>>](#)

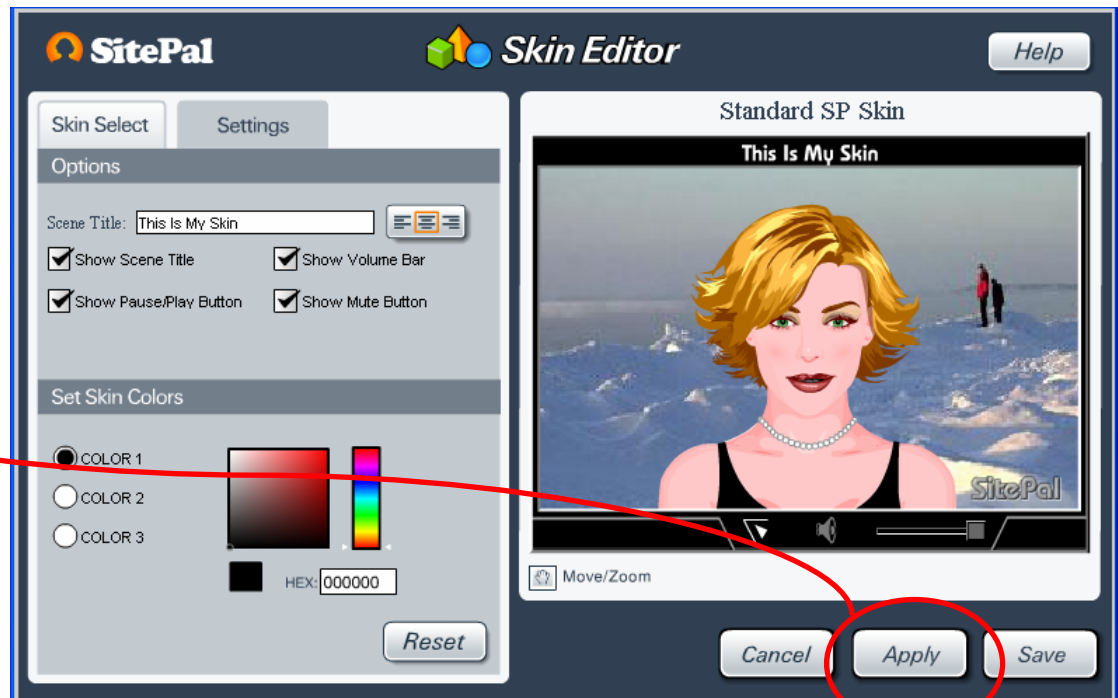


In this area you can add a title to your Player Skin as well as enable/disable your Player's audio control options.

You can change the color of your Player Skin by navigating the position on the color slider. The color 1, 2, and 3 options change the colors of separate skin elements. Each skin has its own color element, so feel free to change colors with your chosen skin to see which colors you can change!



Once you have customized your Player Skin to your liking, click “Apply” to view the changes and click ‘Save’ to save them.



[<<BACK](#)

[NEXT>>](#)

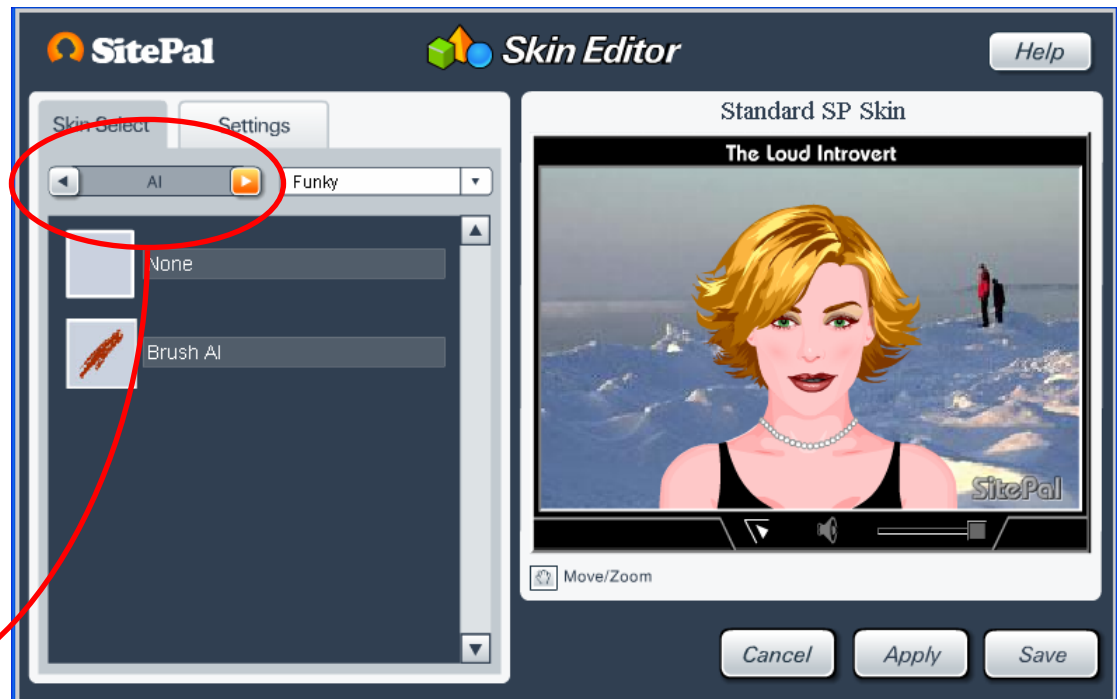


III. Using Functional Player Skins

The SitePal editor now comes with functional player skins that can help you grow your small business.

To access the functional skins, click the appropriate arrow to scroll through your functional skin options. There are now up to three available functional Player Skins depending on your package level

- Lead Generator Skin
(Available to all SitePal accounts)
- FAQ Skin
(Available to Silver and Gold accounts)
- Artificial Intelligence (AI) Skin
(Available to Gold accounts only)

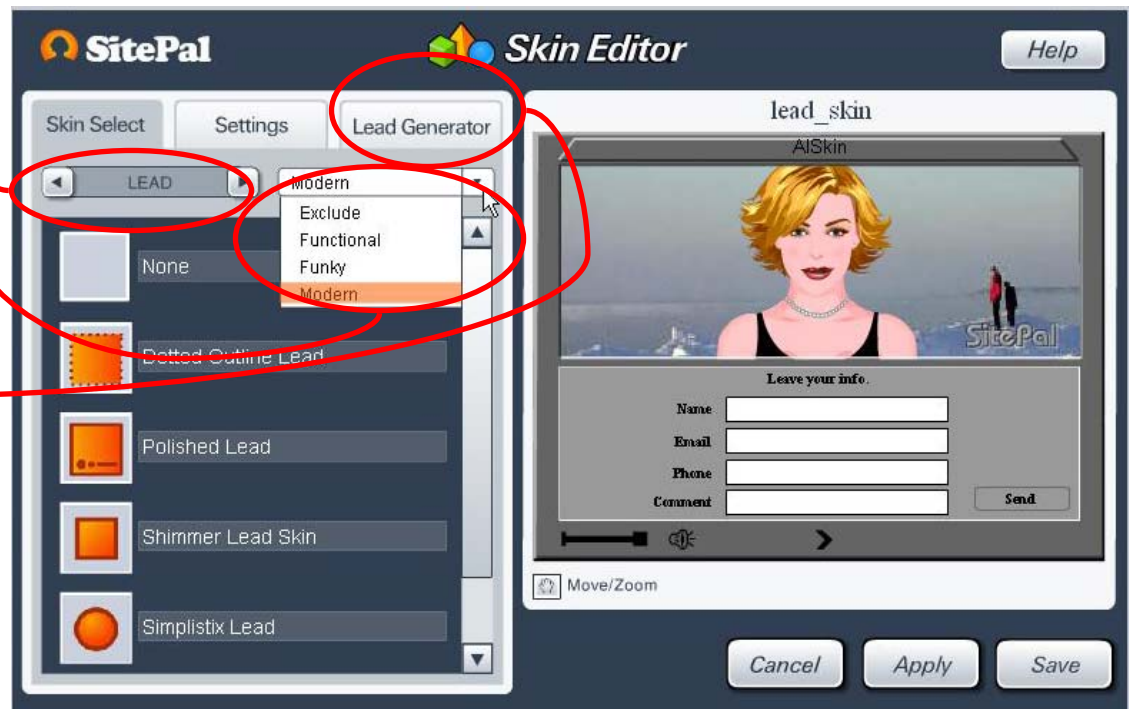
[<<BACK](#)[NEXT>>](#)

III.a. Lead Generator Skin

The *Lead Generator* Skin allows your SitePal speaking character to collect contact information from your potential customers such as phone numbers or email address. It even emails the collected information to you in real time!

To use the *Lead Generator* skin, select it from the menu options, then pick the skin design of your choice.

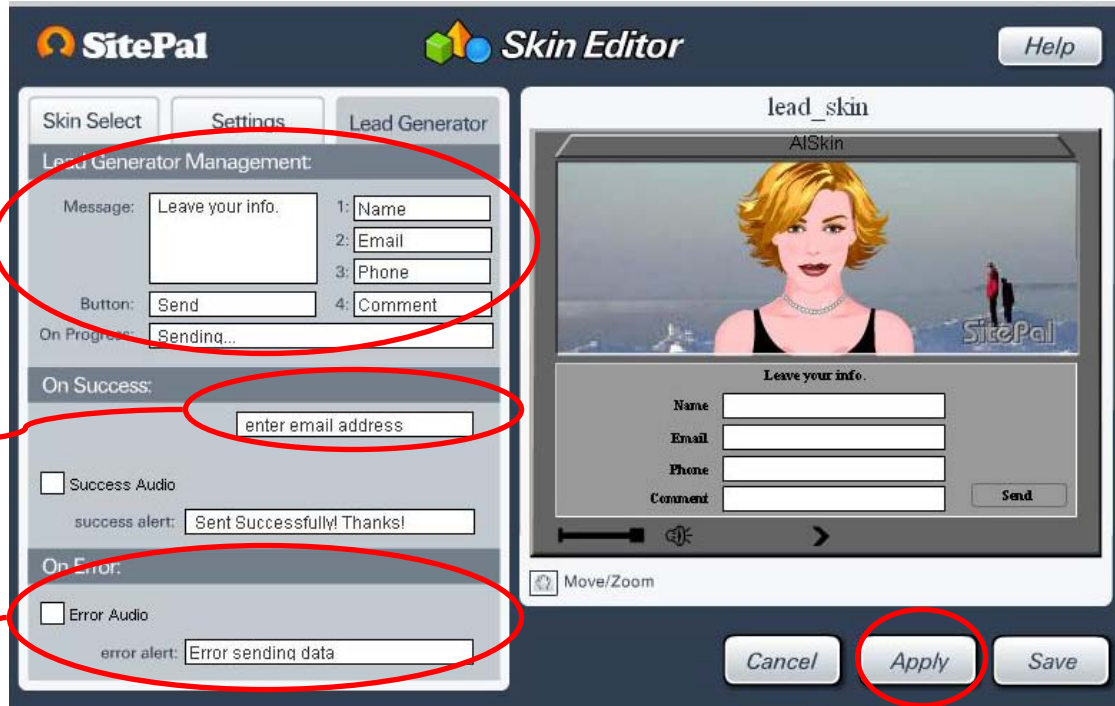
To customize your *Lead Generator* skin, click the “Lead Generator” tab that appears on the top.

[<<BACK](#)[NEXT>>](#)

In this area you can define the text fields to allow the skin to collect any information you choose!

Enter the email address where you would like the collected information sent to.

You also have the option of selecting an audio message to let your visitors know if their information was received successfully or if there was an error.



The image shows the SitePal Skin Editor interface. It has three tabs: 'Skin Select', 'Settings', and 'Lead Generator'. The 'Lead Generator' tab is active, showing 'Lead Generator Management'. This section includes a 'Message' field with 'Leave your info.', a 'Button' field with 'Send', and an 'On Progress' field with 'Sending...'. Below these are 'On Success' and 'On Error' sections. The 'On Success' section has a checkbox for 'Success Audio' and a 'success alert' field with 'Sent Successfully! Thanks!'. The 'On Error' section has a checkbox for 'Error Audio' and an 'error alert' field with 'Error sending data'. To the right of the 'On Success' section is a field for 'enter email address'. On the far right is a preview window titled 'lead_skin' showing a skin with a woman's image and a form with fields for 'Name', 'Email', 'Phone', and 'Comment', and a 'Send' button. At the bottom right are 'Cancel', 'Apply', and 'Save' buttons. Red circles and lines highlight the 'Message', 'Button', 'On Progress', 'On Success' section, 'enter email address' field, 'On Error' section, and the 'Apply' button.

Click "Apply" to view your change, and click 'Save' to save them.

[<<BACK](#)

[NEXT>>](#)

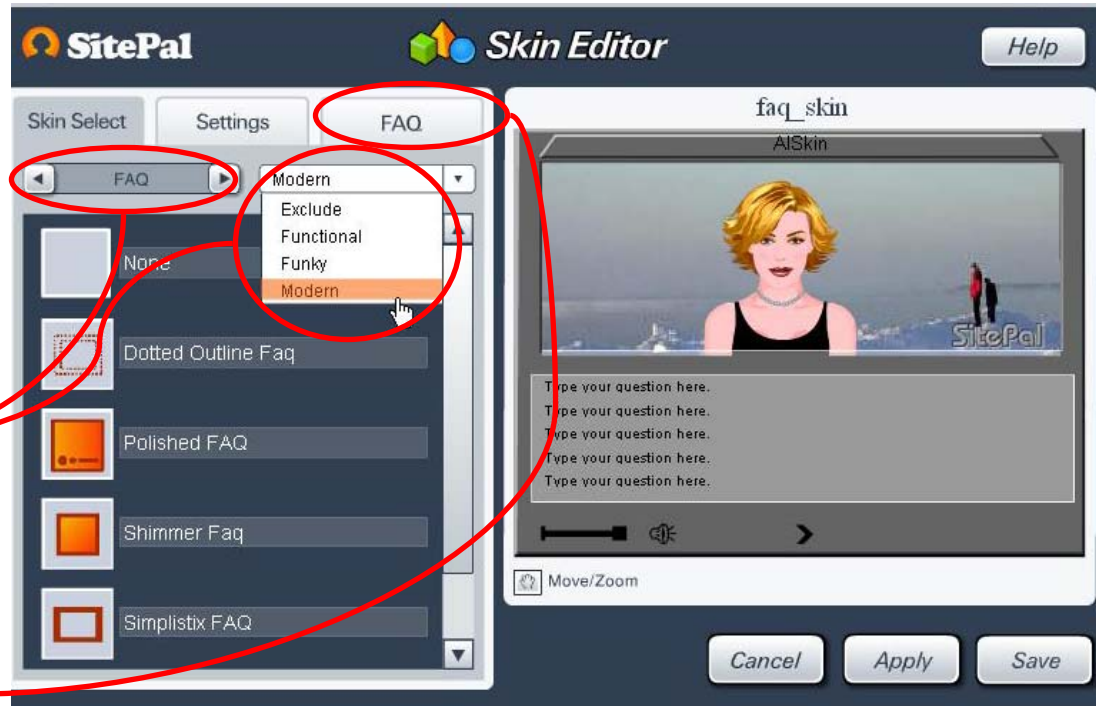


III.b. FAQ Skin

The FAQ skin allows you to use your SitePal character to answer FAQs from your website visitors. Simply input your questions and set the corresponding audio answers by using Text-to-Speech or Record-by-phone feature.

To begin using the FAQ skin, select it from the menu options, then pick the skin design of your choice.

To customize your FAQ skin, click the "FAQ" tab.



To begin adding questions to your FAQ skin, press the “Add” button.

In this area you can type in a question of your choice, then click “Choose Audio Answer” to upload an audio of your choice. Next use the “order” drop down menu to select the order in which you want the question to appear.



Click “Apply” to view your change, and click ‘Save’ to save them.

[<<BACK](#)

[NEXT>>](#)

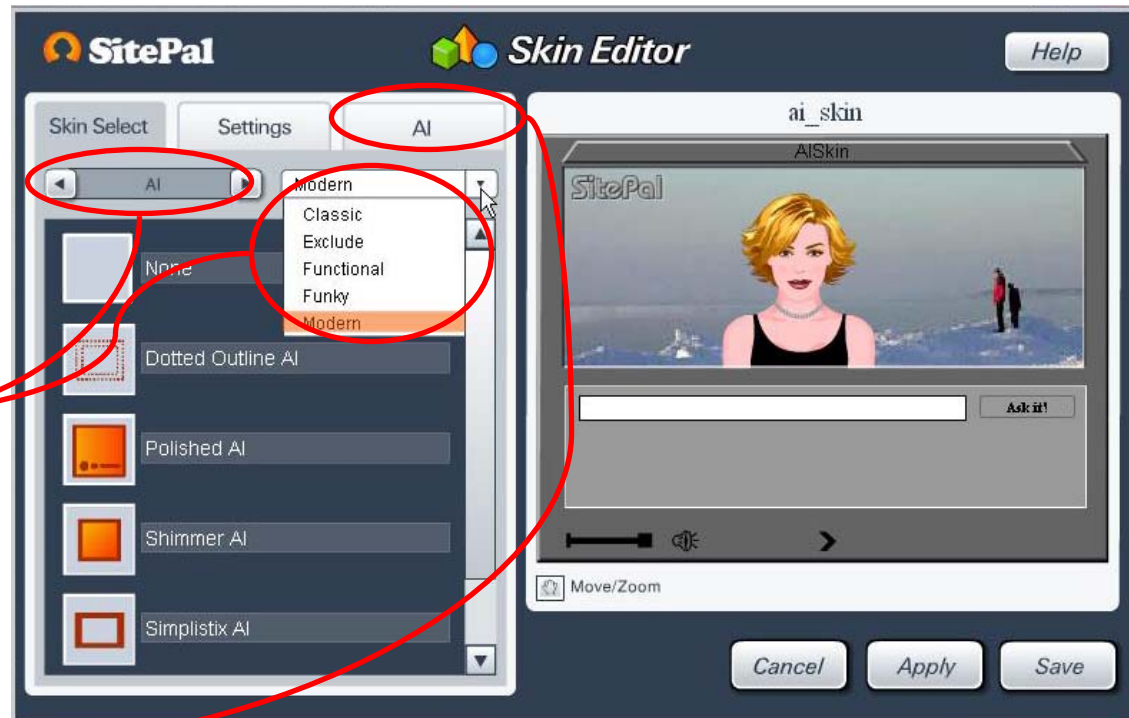


III.a. Artificial Intelligence (AI) Skins

Interacting with your website visitors is now easier than ever. Using SitePal's new AI Skin, you can configure your Sitepal character to have an intelligent chat with your website visitors on any topic you pre-defined.

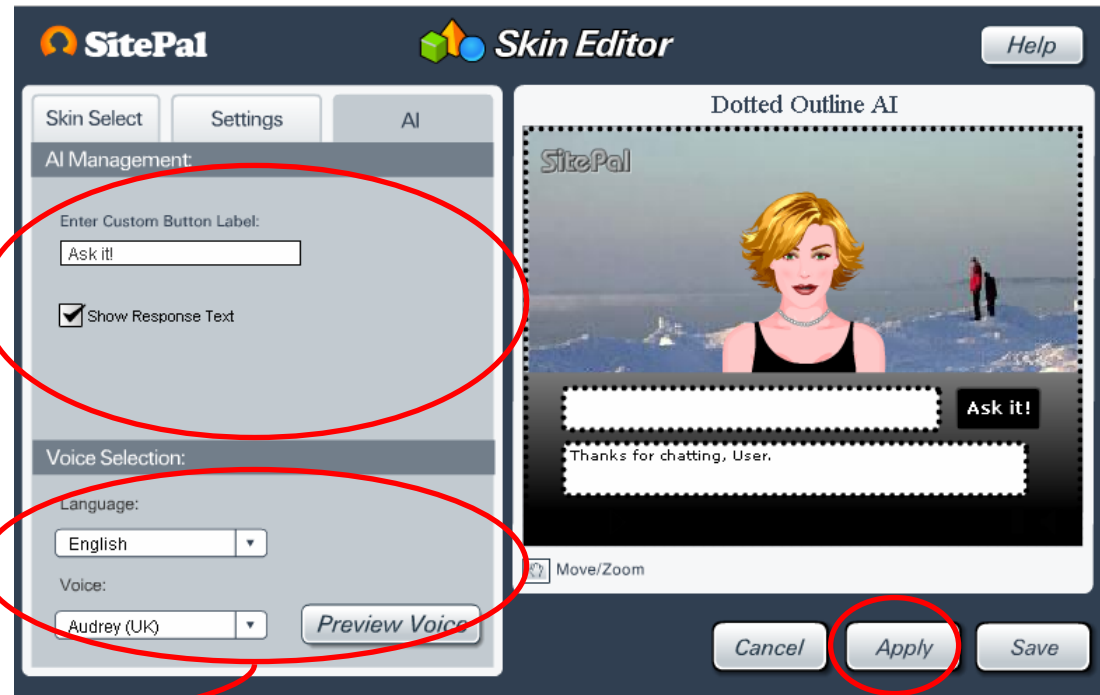
To begin using the AI skin select it from the menu options, then pick the skin design of your choice.

To customize your AI skin, click the "AI" tab.



Here you can modify the text of the “ask it” button and choose whether you would like the auto-response to be displayed as text.

You can also select what language and voice you would like your SitePal speaking character to use.



Click “Apply” to view your change, and click “Save” to save them.

Please Note: For more advanced features on how to add information to your AI knowledge base, please contact support@SitePal.com

[<<BACK](#)

[NEXT>>](#)





Thank you

SitePal Support Team
support@SitePal.com